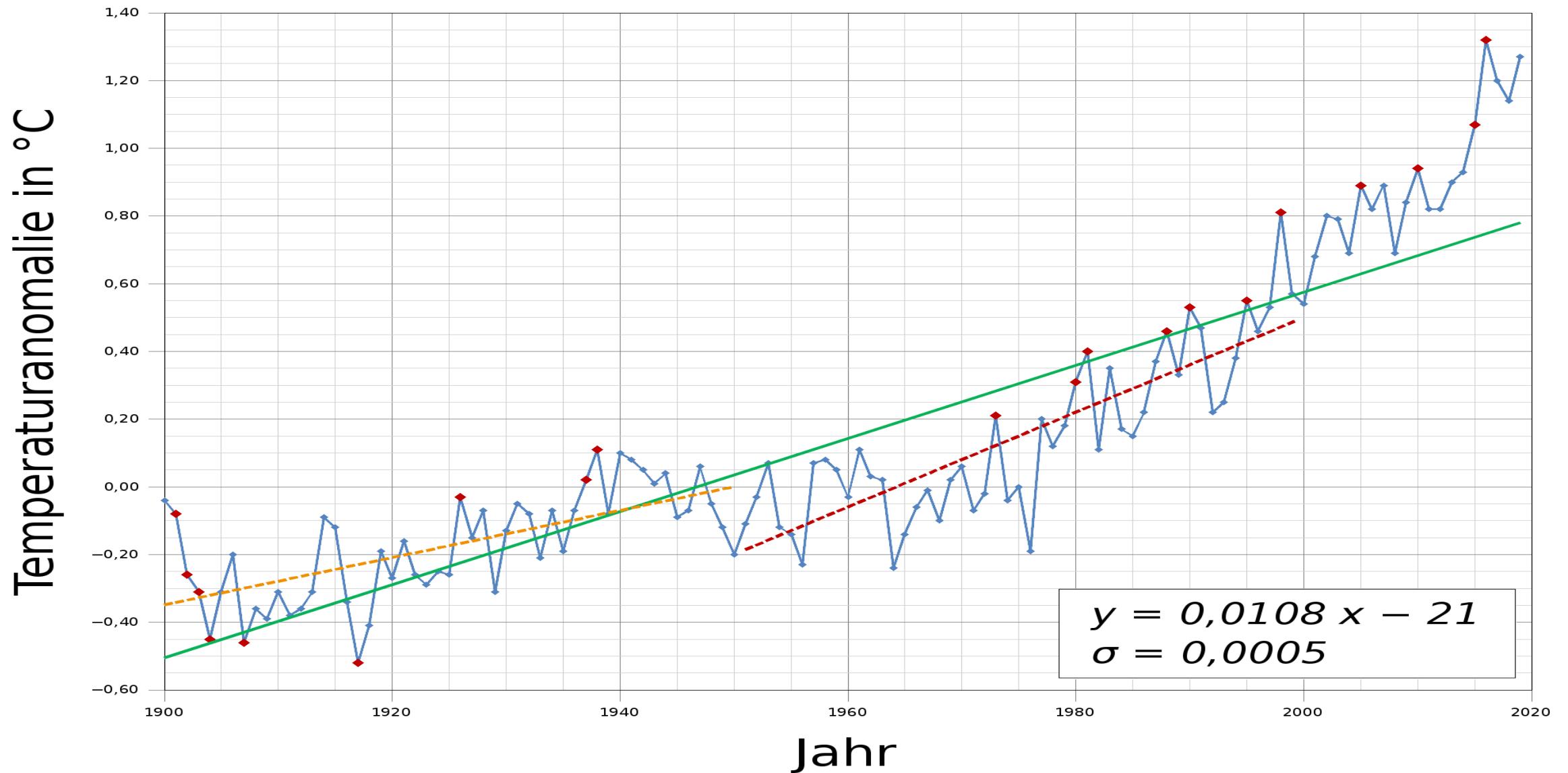
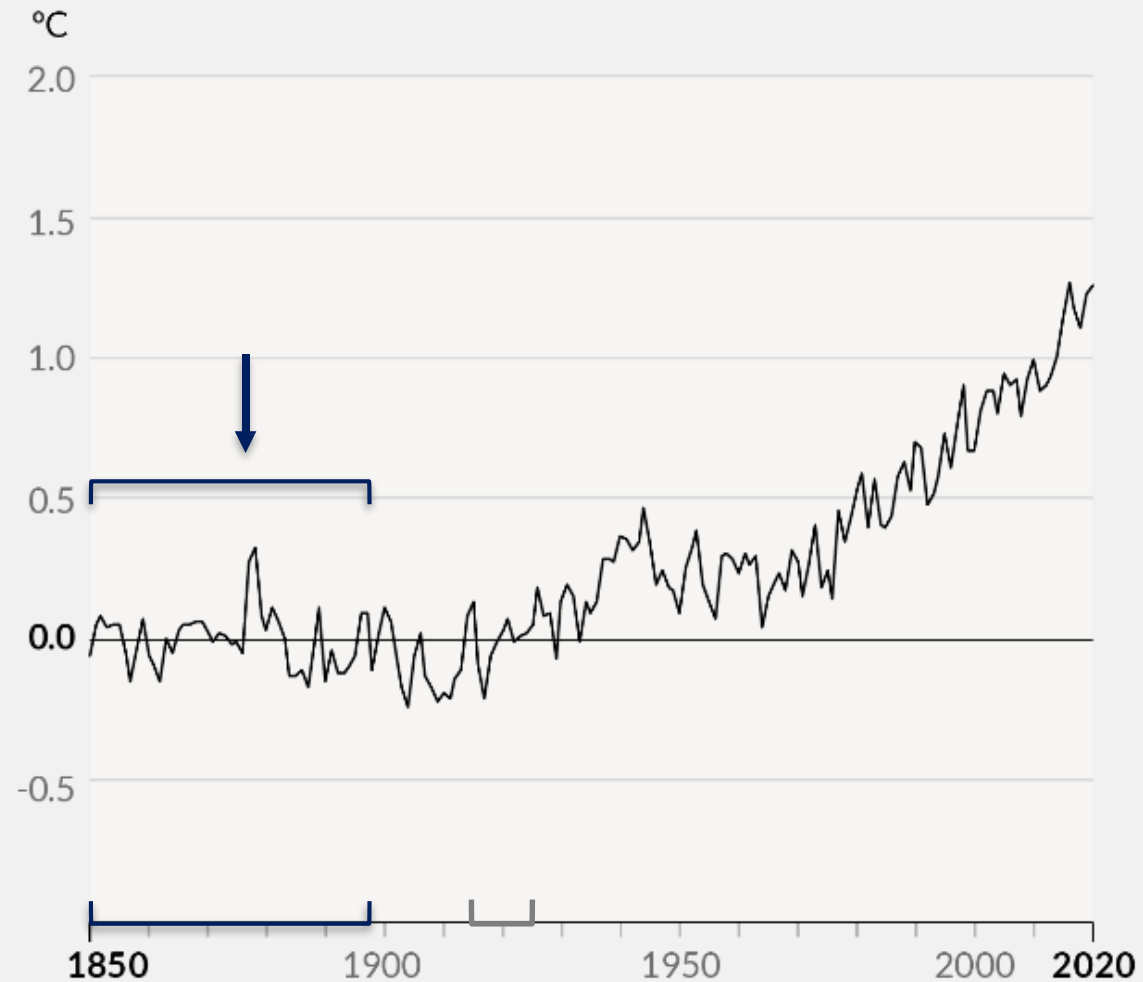
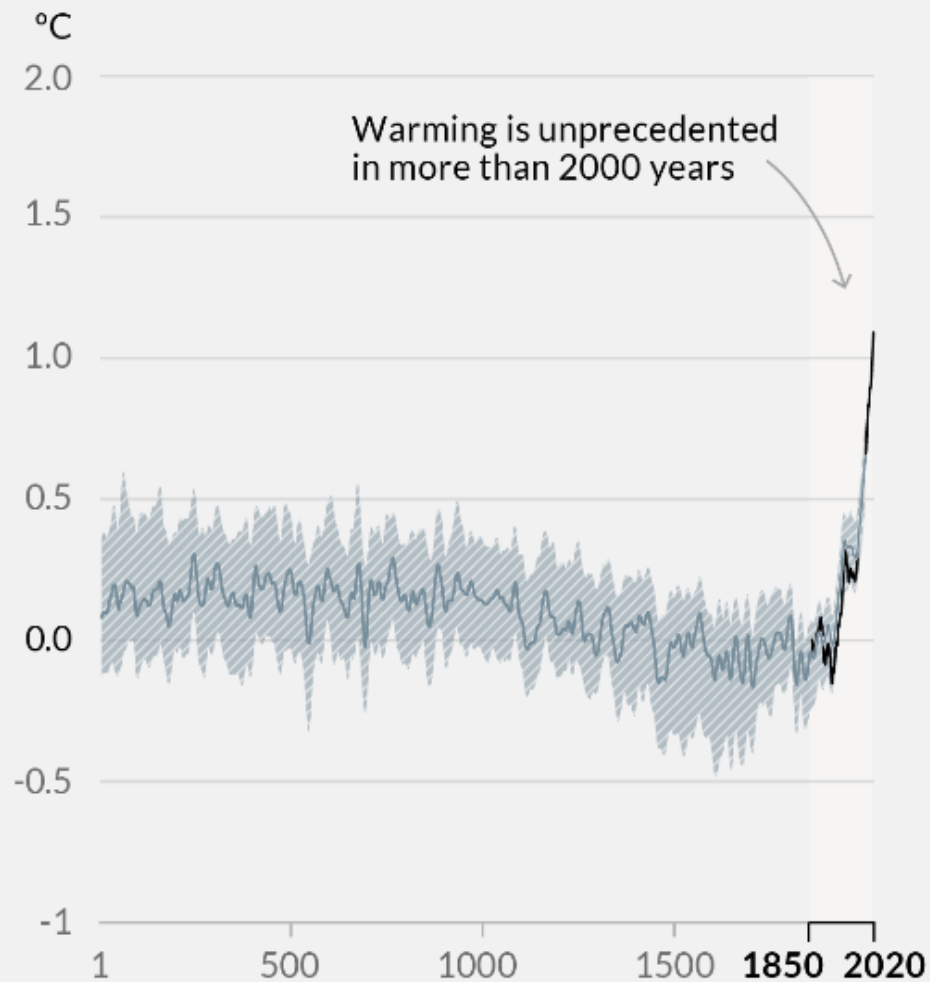


# **The Printing Industry - and its role in Climate Change**

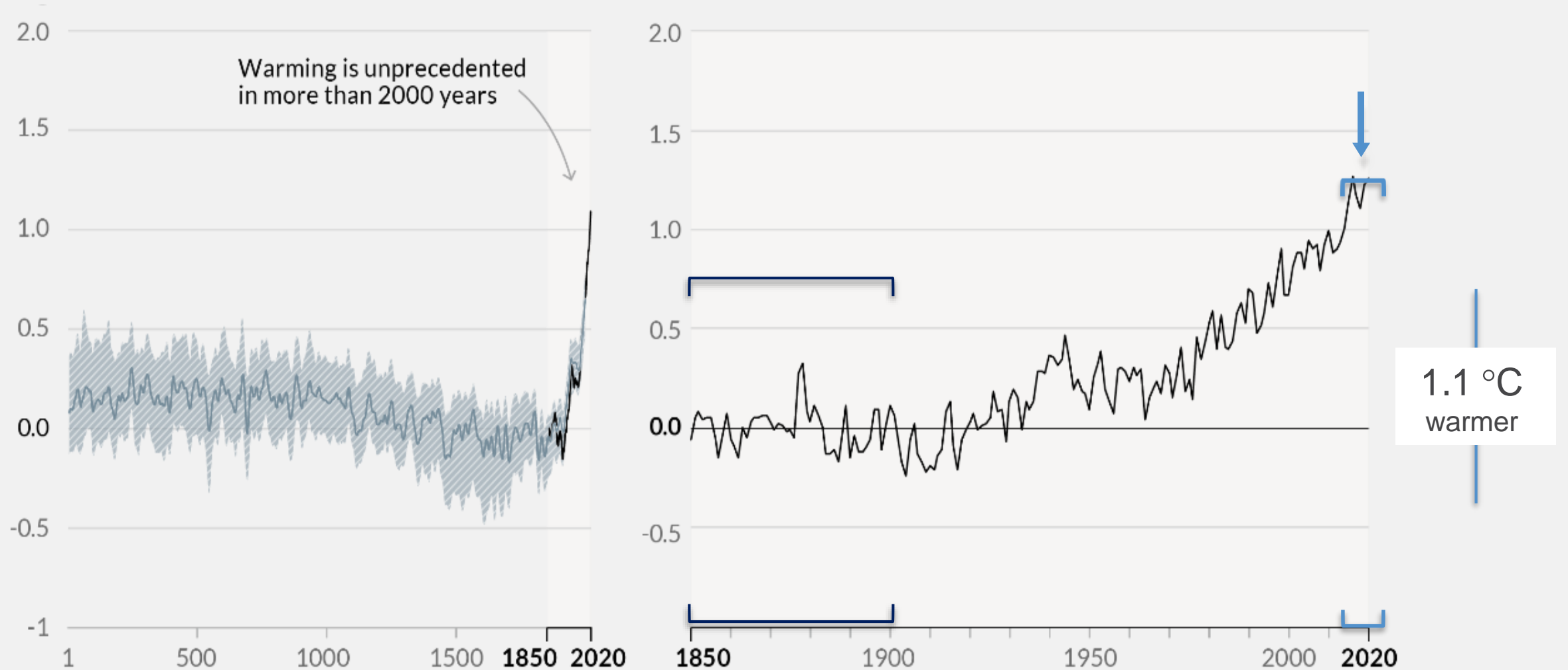
# Temperature Anomaly: Sign of climate change



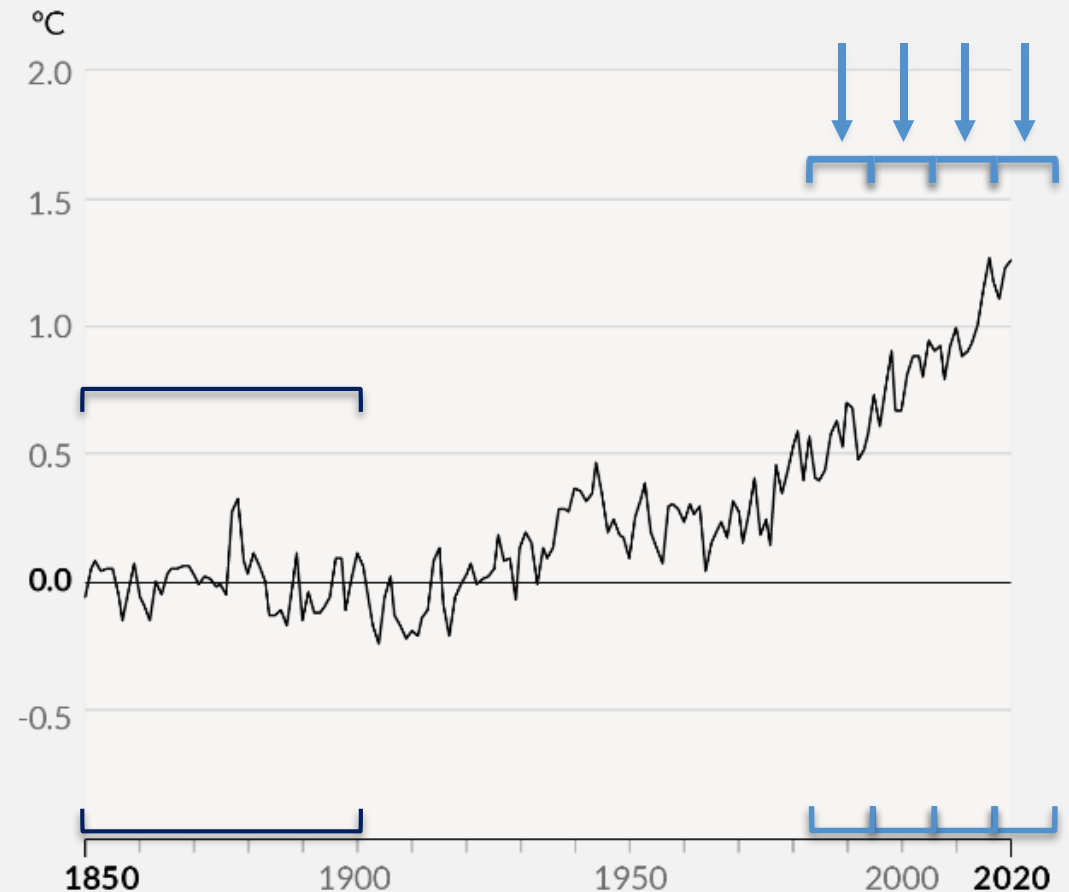
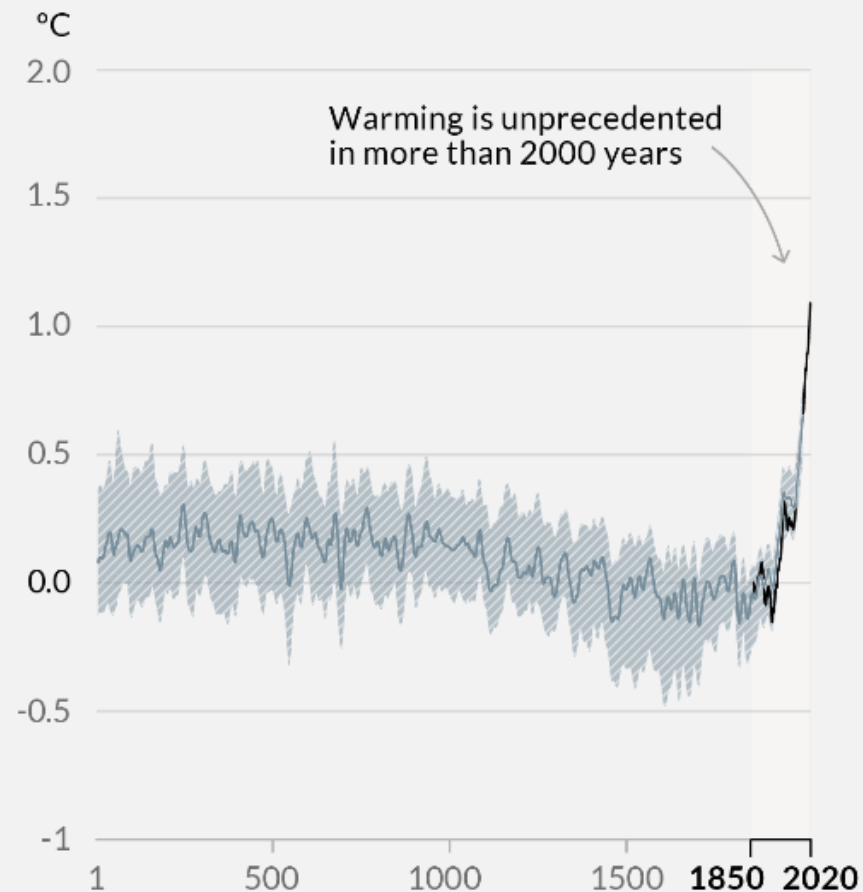
# Changes in average temperature - in correlation to 1850-1900



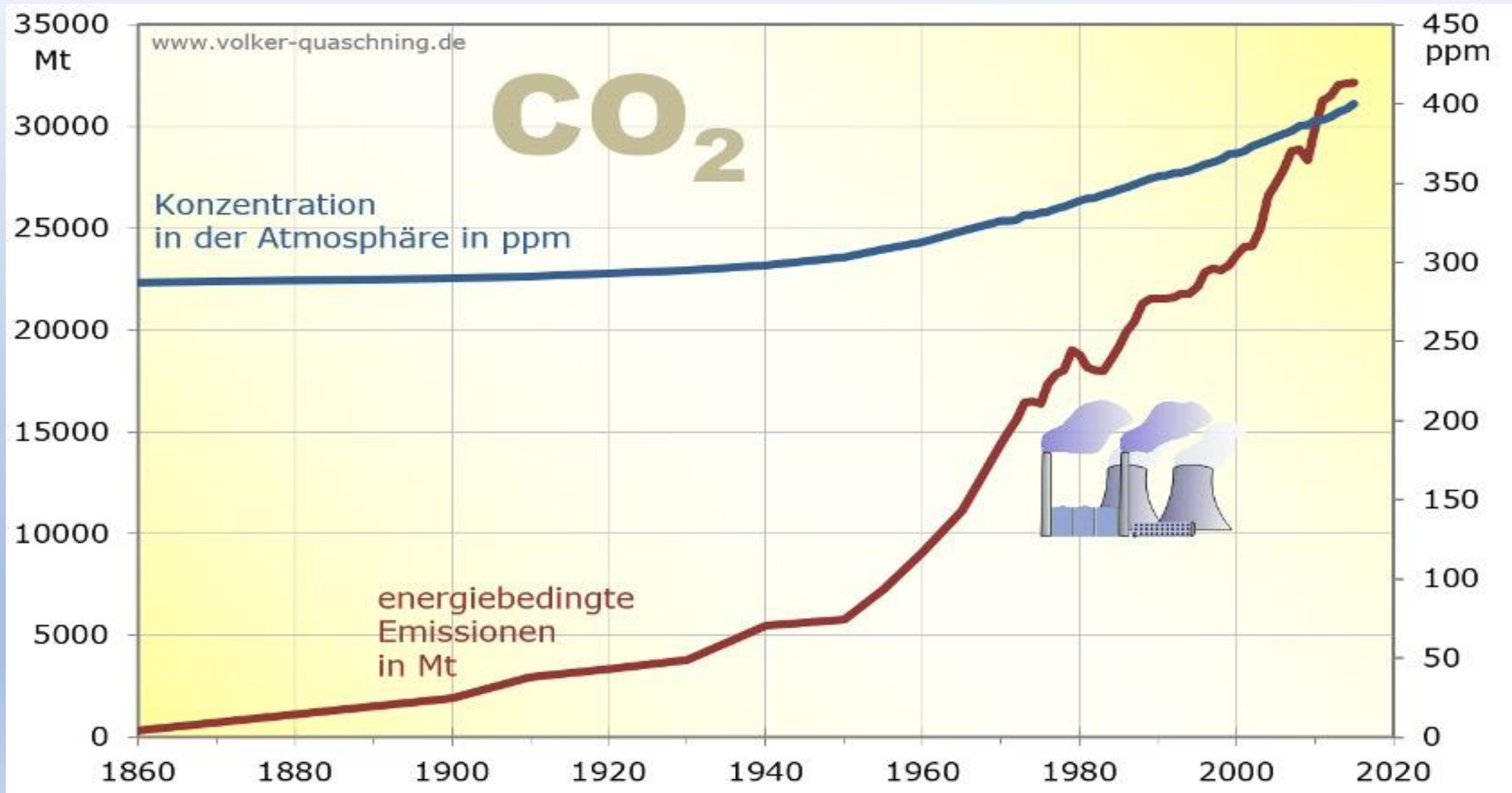
# Changes in average temperature - in correlation to 1850-1900



# Changes in average temperature - in correlation to 1850-1900



# CO<sub>2</sub> and its role in the climate question



# Facts and data on CO<sub>2</sub> emissions

Kohlendioxid-Emissionen MtCO <sub>2</sub>	1990	%	2020	%
Welt	22.750		34.807	
Asien	5.783	25,42	17.756	51,01
Zentralamerika	95	0,42	169	0,49
Europa	8.016	35,24	4.946	14,21
Naher Osten	845	3,71	2.568	7,38
Nordamerika	5.889	25,89	5.606	16,11
Ozeanien	309	1,36	438	1,26
Südamerika	596	2,62	994	2,86
Afrika	659	2,90	1.326	3,81

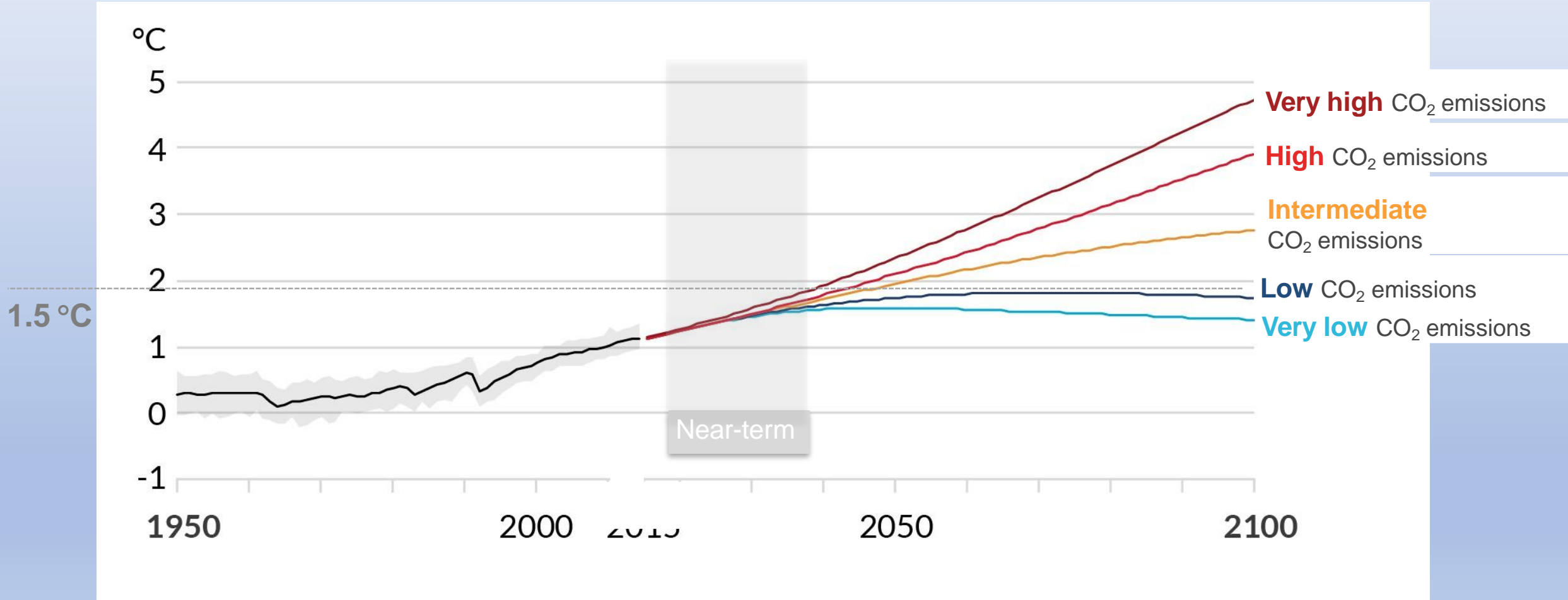
# Facts and data on CO<sub>2</sub> emissions

Kohlendioxid-Emissionen MtCO <sub>2</sub>	1990	%	2020	%
Welt	22.750		34.807	
Brasilien	219	0,96	467	1,34
China	2.485	10,92	10.668	30,65
Indien	579	2,55	2.442	7,02
Indonesien	150	0,66	550	1,58
Japan	1.158	5,09	1.031	2,96
Russische Föderation	2.528	11,11	1.577	4,53
USA	5.114	22,48	4.713	13,54
Afrika	659	2,90	1.326	3,81
Deutschland	1.053	4,63	644	1,85
EU27	3.863	16,98	2.599	7,47

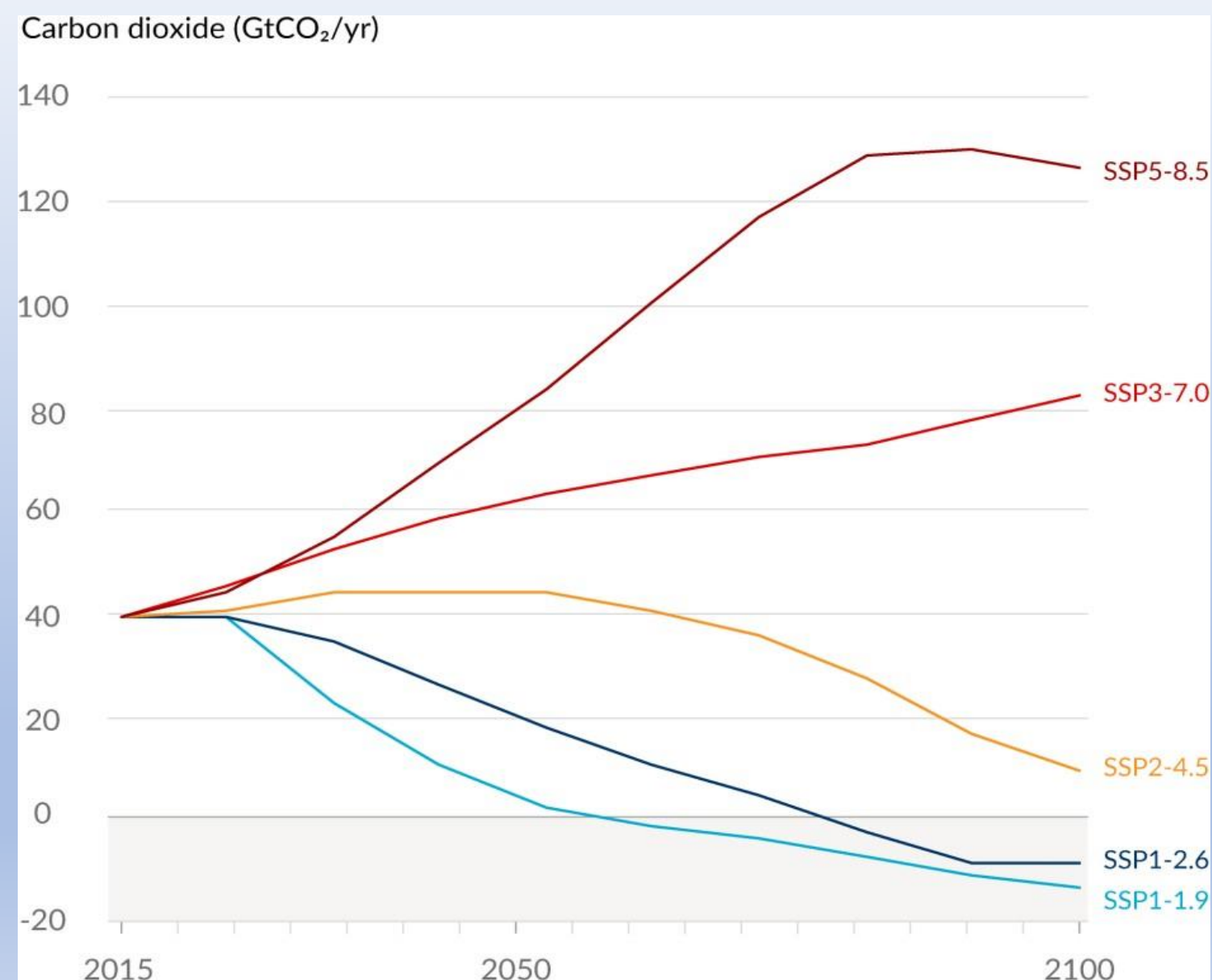


# Prognosis of current IPCC report AR6

All future emissions have an impact on global warming !



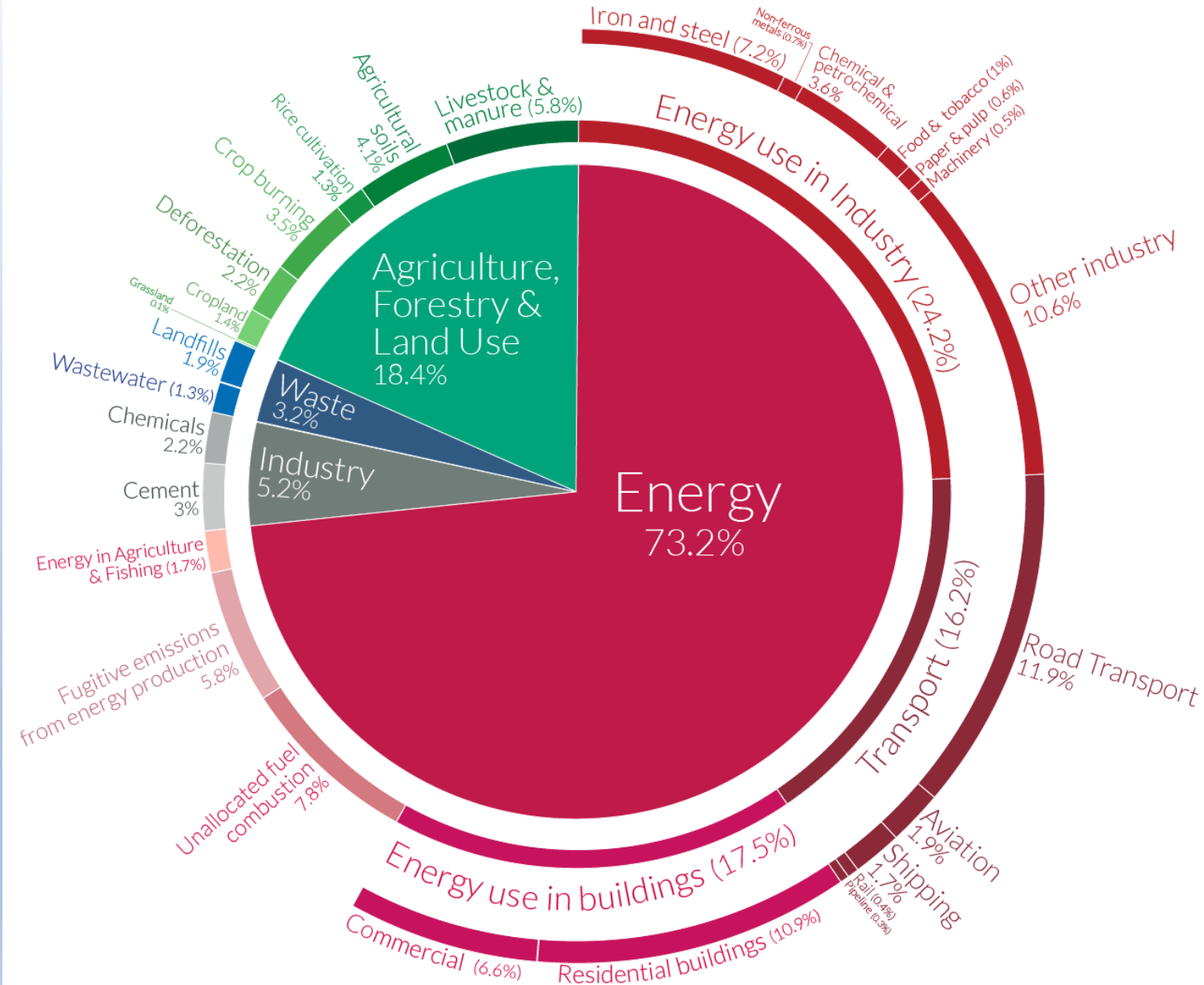
# Prognosis of current IPCC report AR6



Future CO<sub>2</sub> emissions cause additional global warming, although the aggregate impact is heavily influenced by past and CO<sub>2</sub> emissions

# Global greenhouse gas emissions by sector

This is shown for the year 2016 – global greenhouse gas emissions were 49.4 billion tonnes CO<sub>2</sub>eq.



# The best news of AR6

*»Strong, rapid and sustained reductions in  $CO_2$ - emissions would also limit the warming effect resulting from declining aerosol pollution and would improve air quality«*

# Worth to be considered/useful questions

- How can I personally contribute to a reduction of CO<sub>2</sub>? Check your personal CO<sub>2</sub> footprint
- How can my company/my industry sector contribute to a reduction of CO<sub>2</sub>?